



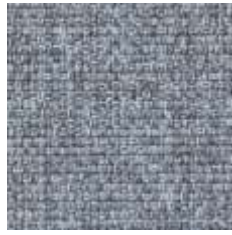
.mdd

FABRICS

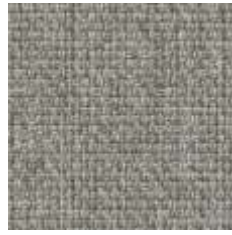
MEDLEY



M-60999



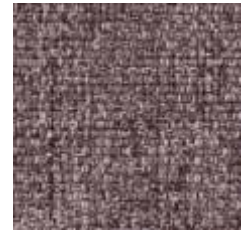
M-66008



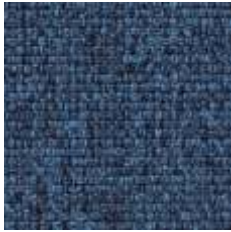
M-60003



M-61189



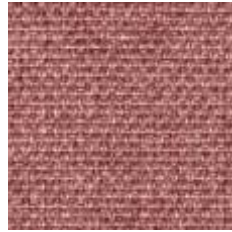
M-65011



M-66010



M-67006



M-63064



M-63017



M-64019



M-68005



M-62054



M-62002

Group II

VITA



V-07



V-04



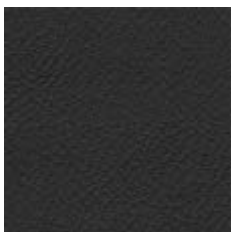
V-01



V-18



V-19



V-12



V-03



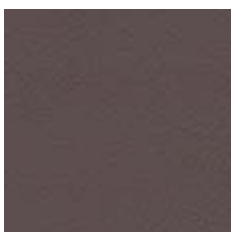
V-11



V-29



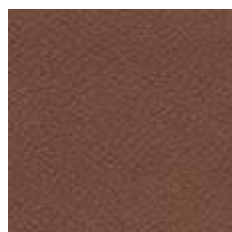
V-09



V-10



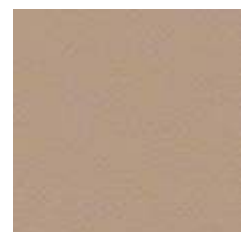
V-46



V-39



V-02



V-44

Group II

C-41

GO CHECK

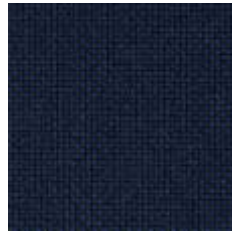
Group II



Go Uni-60999



G-60080



G-66138



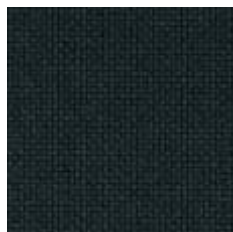
G-66136



G-66135



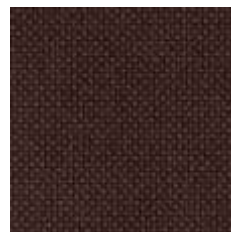
G-60084



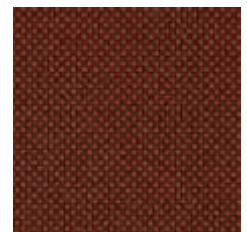
G-68149



G-68152



G-61145



G-61144



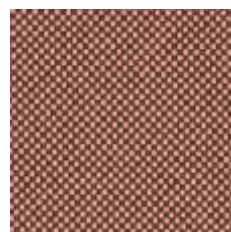
G-64172



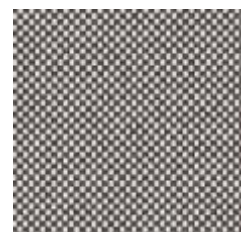
G-64171



G-63079



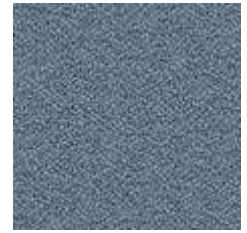
G-64183



G-60079

MICA

Group II



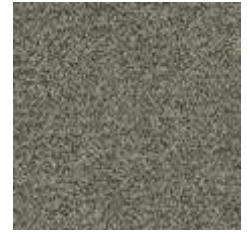
MC-2496-64183

MC-2496-64146

MC-2497-64146

MC-2497-66006

MC-2496-66030



MC-2497-67042

MC-2497-67017

MC-08 2497-68146

MC-2497-62048

MC-2496-62093



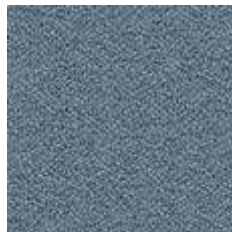
MC-2496-62095

MC-2496-62096

MC-2496-61008

MC-2496-60000

MC-2497-60000



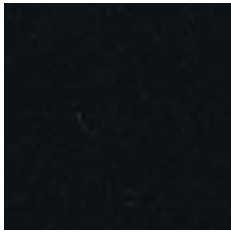
MC-2497-60021

MC-2496-66031

MC-2496-67015

MC-2497-64029

SYNERGY



LDS-27



LDS-29



LDS-20



LDS-08



LDS-19



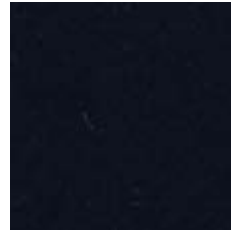
LDS-61



LDS-50



LDS-60



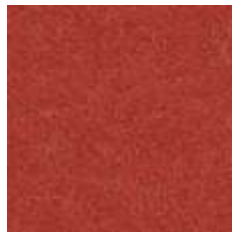
LDS-69



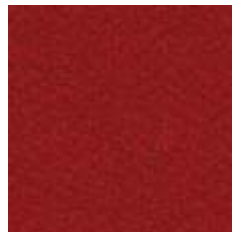
LDS-57



LDS-44



LDS-84



LDS-86



LDS-88

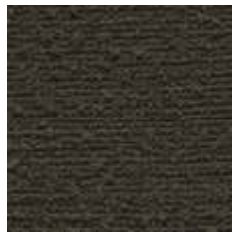


LDS-579

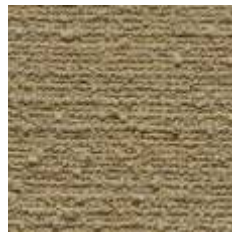
TESSA



T-02



T-03



T-09



T-05



T-08

Group III

OCEANIC



O-16



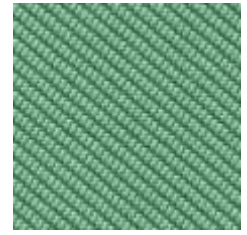
O-05



O-12



O-07



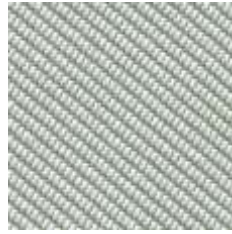
O-04



O-15



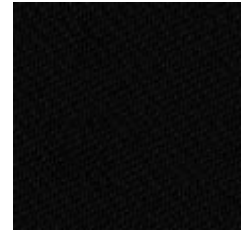
O-11



O-13



O-08



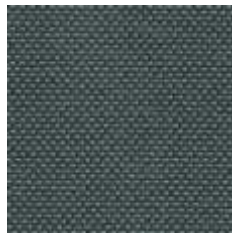
O-01

Group III

QUEST



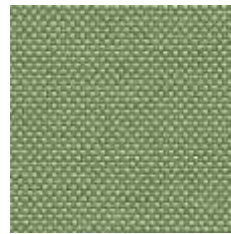
Q-08



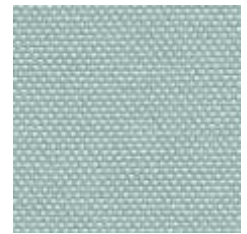
Q-04



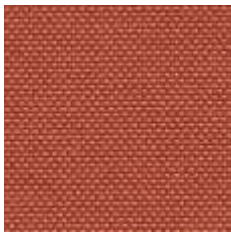
Q-18



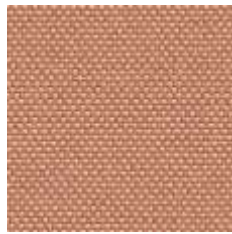
Q-13



Q-07



Q-24



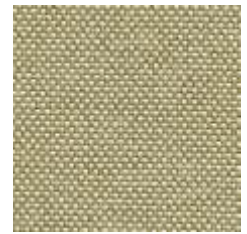
Q-26



Q-25



Q-21



Q-19

Group III

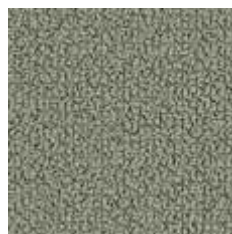
GRAIN



GR-66232



GR-68243



GR-60301



GR-61252



GR-61250



GR-66236



GR-63117



GR-62016



GR-62122



GR-64249

Group III

Price group	Fabric	Material	Weight	Abrasion resistance rubs	Pilling resistance	Colour fastness to light	Colour fastness to rubbing	Flammability	More information
I	NEMO	Polyester 100%	366g/m2	PN-EN ISO 12947 - 2:2 100,000	Scale 1-8, max 8, PN-EN ISO 105 B02:2013 3-4	Scale 1-5, max 5, PN-EN 1021 - 2:2007, PN-EN 1021 - 1:2007	Scale 1-5, max 5, EN ISO 105x12, (wet/dry) 4-5	Cigarette: PN-EN 1021-1:2014-12 Match flame: PN-EN 1021-2:2014-12	
II	RUNNER	80% polyester / 20% post-consumer recycled polyeste	320g/m2, 510g/lm	70,000 Martindale, BS EN 14465, EN ISO 12947-2 , Double rubs wyzenbeek (ASTM D4157-07) (heavy duty upholstery)	Scale 1-5, max 5, EN ISO 12945-2 4-5	Scale 1-8, max 8, EN ISO 105-B02 5-7	Scale 1-5, max 5, EN ISO 105x12, (wet/dry) 4-5	BS EN 1021-2 Match, BS EN 1021-1 Cigarette, California Bulletin CAL 117-E-Class 1, CA TB 117-2013, Class Uno UNI 9175 Class 1	Acoustic test sound absorption ISO 354
II	MEDLEY	Polyester 100%	364g/m2, 510g/lm	75,000 Martindale	Scale 1-5, max 5, EN ISO 12945-2 4	Scale 1-8, max 8, EN ISO 105-B02 5-7	Scale 1-5, max 5, EN ISO 105x12, (wet/dry) 4-5/4-5	BS EN 1021-2 Match, BS EN 1021-1 Cigarette, California Bulletin CAL 117-E-Class 1, CA TB 117-2013, Class Uno UNI 9175 Class 1	Acoustic test sound absorption: ISO 354
II	ATLANTIC	Polyester 100%	353g/m2, 530g/lm	110,000 Martindale, EN ISO 12947-2)		Scale 1-8, max 8, EN ISO 105-B02 5-7	Scale 1-5, max 5, EN ISO 105x12, (wet/dry) 4-5/4-5	BS EN 1021-2 Match, BS EN 1021-1 Cigarette, ASTM E 84, BS 476 Part 7, Class Uno UNI 9175 Class 1, NF P 92-503 M3P, CA TB 117-2013	
II	VITA	Surface: PVC, 98.5%, PU 1.5% Substrate: Polyester 50%, 50% Cotton	850g/m2, 1190g/lm	100,000 Martindale, EN ISO 5470-2:2003,		Scale 1-8, max 8, EN ISO 105-B02 5-7	Scale 1-5, max 5, EN ISO 105x12, (wet/dry) 4-5/4-5	BS EN 1021-2 Match, BS EN 1021-1 Cigarette, BS 5852:2006 Section 4, Ignition Source 5, BS 7176:2017 Medium Hazard NF P 95 503 M2, FMVSS 302 (ISO 3795)	Flexing cycles: BS EN ISO 7854:1997 Method B, 400,000, Anti-microbial/ Anti-fungal: AATCC 147:2011
II	CHARLES	Polyester 100%	433g/m2	90,000 Martindale, EN ISO 12947-2	Scale 1-5, max 5, EN ISO 12945-2 5	EN ISO 105-B02 5	Scale 1-5, max 5, EN ISO 105-X12, (wet/dry) 4-5	EN1021-2	Thread offset in the seam: EN ISO 13 936-2
II	GO CHECK	Trevira cs 100%	310g/m2	Go Check 80,000/ Go Uni 1 00,000 Martindale, EN ISO 12947-1,2 60,000 Double rubs	Scale 1-5, max 5, EN ISO 12945-2 5	Scale 1-8, max 8, EN ISO 105-B02 5-8	Scale 1-5, max 5, EN ISO 105-X12:2001, (wet/dry) 4-5/4-5	BS EN 1021-1&2 Cigarette and Match, BS 5852:2006 Crib 5, BS 7176:2017 Medium Hazard, NFP 92-503/504/505 M1, Class Uno UNI 9175 Class 1	
II	MICA	97% post-consumer recycled polyester / 3% polyester	218g/m2	60,000 Martindale, EN ISO 12947-2 100,000 Double rubs wyzenbeek (ASTM D4157-07)	Scale 1-5, max 5, EN ISO 12945-2 4-5	Scale 1-8, max 8, EN ISO 105-B02 5-8	Scale 1-5, max 5, EN ISO 105-X12:2001, (wet/dry) 4-5/4-5	BS EN 1021-1 Cigarette, BS EN 1021-2 Match, CA TB 117-2013, ASTM E 84 Class 1, BS 476 Part 7 Class I	Acoustic test air flow resistanc EN 29053 & ISO 9053-1 (airflow resistance)
III	SYNERGY	Virgin Wool 95%, Polyamide 5%	400g/m2 560g/lm	100,000 Martindale		ISO 105 B02: 5	Scale 1-5, max 5, EN ISO 105-X12:2001, (wet/dry) 4/4	BS EN 1021-1&2 Cigarette and Match, BS 7176 Low Hazard. UNI 9175 Classe 1 IM, B 3825 & A 3800-1	
III	TESSA	Poliester 95%, Akryl 5%	500g/m2	>75,000 Martindale ISO 12 497-2	Scale 1-5, max 5, EN ISO 12945-2 4-5	ISO 105 B02: 4	Scale 1-5, max 5, EN ISO 105-X12:2001, (wet/dry) 4-5/4-5		Thread offset in the seam: EN ISO 13 936-2
III	SILVERTEX	Vinyl / Urethane Topcoat	685g/m2	>300,000 Martindale (EN ISO 12947-2)		UV Resistance: ISO 105 B04 ≥4/5		BS EN 1021-1&2 Cigarette and Match, EN 71-2:2006+A1:2007, NF P..IMO FTP 2010 Code MSC.307 (88) Part 8 3.1 & 3.2, NI 9175 (1987) / UNI 9175/FA1 (1994) Classe 1.IM, 92-503/M2, UNE 23.727-90 1R/M.2, DIN 4102 B2, B 3825 & A 3800-1	
III	OCEANIC	100% post-consumer recycled polyester including 50% Seaqual Yarn	497g/m2	≥100,000 Martindale		5 (ISO 105 - B02), OOC16: 4/5 (ISO 105 - B02)	Scale 1-5, max 5, EN ISO 105-X12:2001, (wet/dry) 4-5/4-5	BS EN 1021-1&2 Cigarette and Match, BS 7176 Low Hazard. BS 5852 Ignition Source 5 with EnviroFlam5, BS 7176 Medium Hazard with EnviroFlam5	
III	QUEST	100% post-consumer recycled polyester including 75% Seaqual Yarn	330g/m2	≥100,000 Martindale		4-6 (ISO 105 - B02)	Scale 1-5, max 5, EN ISO 105-X12:2001, (wet/dry) 4/4	BS EN 1021-1&2 Cigarette and Match, BS 7176 Low Hazard. BS 5852 Ignition Source 5 with EnviroFlam5, BS 7176 Medium Hazard with EnviroFlam5, B 3825 & A 3800-1	
III	GRAIN	2287: 92% post-consumer recycled polyester / 8% polyester 2288: 80% post-consumer recycled	439g/m2	100,000 Martindale (EN ISO 12947-2), double rubs wyzenbeek (ASTM D4157-07) (heavy duty upholstery) 100,000	Scale 1-5, max 5, EN ISO 12945-2 5	scale 1-8, max. 8 5-7 (ISO 105 - B02)	Scale 1-5, max 5, EN ISO 105-X12:2001, (wet/dry) 4-5/4-5	BS EN 1021-1&2 Cigarette and Match, CA TB 117-2013	

* Fabric available in the full colour range from the manufacturer's offer.

Attention

Colours and decors structure of shown material may differently from the reality.